

Program

Day 1

**Saturday
11 October, 2014**

Participant Arrivals

12:30 Lunch / MH

14:30 Coffee / Tea / ML

15:00 Welcome and Opening Remarks / PH

Clare Shine

Vice President & Chief Program Officer | Salzburg Global Seminar

Michael Nettles

Senior Vice President | Educational Testing Services

Marybeth Gasman

Professor | University of Pennsylvania

15:20 Objectives & Expectations for Seminar / PH

Marybeth Gasman

Professor | University of Pennsylvania

15:30 Introductions / PH

State your name and how you serve students at the margins

Facilitated by:

Michael Nettles

Senior Vice President | Educational Testing Services

17:00 Students at the Margins / PH

Jennifer Cordova

President of Student Executive Board | Northwest Indian College

Daniel Emerimana

Student | Jesuit Commons: Higher Education at the Margins, Kenya

Student voices from institutions serving those at the margins

Facilitated by:

Michael Nettles

Senior Vice President | Educational Testing Services

Marybeth Gasman

Professor | University of Pennsylvania

18:00 Adjourn/Wrap Up & Thoughts for Next Day

18:30 Tour of the Schloss (Optional) / GH

19:00 Dinner / MH

AT Atrium
BR Board Room
BS Bierstube
CCR Cone Conference Room
CR Chinese Room
GH Great Hall
MGR McGowan Room
MH Marble Hall
ML Meierhof Lobby
MRL Max Reinhardt Library
PH Parker Hall
RG Robison Gallery
R Reception
SR1 Seminar Room 1
SR2 Seminar Room 2
SR3 Seminar Room 3
TR Schloss Terrace
VR Venetian Room

Please see the floor plan at the end of the Program for reference.

Program

Day 2

Sunday
12 October, 2014

07:30 Breakfast / MH

09:00 Program Check-in / PH

Diasmer Panna Bloe

Program Director | Salzburg Global Seminar

09:05 Taxonomies of Diversity Dialogue Groups / PH

Marybeth Gasman

Professor | University of Pennsylvania

Andrés Castro Samayoa

Researcher | University of Pennsylvania Graduate School of Education

This presentation highlights the various national contexts in which we find underrepresented groups and introduces concepts used throughout the seminar through small group-work activities.

10:30 Coffee / Tea / ML

11:00 Small Group Presentations / PH

Participants form groups of 7-10 and discuss key ideas emerging from the preceding presentation. Participants may discuss, select and document common challenges and opportunities in servicing students at the margins, as identified by taxonomies.

Facilitated by:

Marybeth Gasman

Professor | University of Pennsylvania

Andrés Castro Samayoa

Researcher | University of Pennsylvania Graduate School of Education

12:30 Lunch / MH

14:00 The Diversity of Diversity / PH

Dongping Yang

President | 21st Century Education Research Institute

Venitha Pillay

Associate Professor | University of Pretoria

(cont.)

Gad Yair

Director | NCJW Research Center for Innovation in Education, The Hebrew University of Jerusalem

This panel examines the complicated intersections of gender, race, and class that affect educational access depending on national context.

Facilitated by:

Andrés Castro Samayoa

Researcher | University of Pennsylvania Graduate School of Education

15:30 Coffee / Tea / ML

16:00 Displaced Students across the World / PH

Susana M. Muñoz

Assistant Professor, Administrative Leadership | University of Wisconsin, Milwaukee

William New

Professor, Education and Youth Studies | Beloit College

Ita Sheehy

Senior Education Officer | UN High Commissioner for Refugees

Individuals displaced by political turmoil and sustained conflict are often invisible populations within educational contexts. From undocumented students in the United States to initiatives aimed at educational equity for Roma people, this session brings these perspectives and analyses our commitments to and results on efforts facilitating access for all.

Facilitated by:

Michael Nettles

Senior Vice President | Educational Testing Services

17:00 Adjourn/Wrap Up & Thoughts for Next Day

19:00 BBQ Dinner / GH

Program

Day 3

Monday
13 October, 2014

07:30 Breakfast / MH

09:00 Program Check-in / PH

Diasmer Panna Bloe

Program Director | Salzburg Global Seminar

09:05 From the Margins to the Table / PH

Stella Flores

Associate Professor, Public Policy & Higher Education | Vanderbilt University

Marcelo Paixão

Professor, Economics & Sociology | Federal University of Rio de Janeiro

Suellen Shay

Dean | Center for Higher Education Development

This panel discusses the legal frameworks that have broadened access to postsecondary institutions for racial minorities. How have these efforts to diversify the student body transformed the higher education landscape?

Facilitated by:

Michael Nettles

Senior Vice President | Educational Testing Services

10:30 Coffee / Tea / ML

11:00 Student Success: Institutional Spotlights / PH

Pu Hong

Vice President | QuJing Normal University

Zena Richards

Transformation Student Equity, Project Manager | University of Witwatersrand

Michael J. Sorrell

President | Paul Quinn College

This panel highlights the comprehensive work necessary to ensure that all students are supported. What initiatives improve the development of and sustain support systems for underrepresented students?

Facilitated by:

Marybeth Gasman

Professor | University of Pennsylvania

12:30 Lunch / MH

14:00 Speed Meetings / RG

The success of speed dating in romantic configurations is questionable; speed meetings, however, are an opportunity for participants to engage in quick introductory rounds to discuss the reason why they are participating in this seminar.

Facilitated by:

Nelson Bowman III

Executive Director of Development | Prairie View A&M University

15:30 Adjourn/Wrap Up and Thoughts for Next Day

Afternoon off

16:00* EAN Executive Committee Meeting / MGR
EAN Executive Members Only

19:00 Dinner / MH

Program

Day 4

**Tuesday
14 October, 2014**

07:30 Breakfast / MH

09:00 Program Check-in / PH

Diasmer Panna Bloe

Program Director | Salzburg Global Seminar

09:05 Collaborating for Action / PH

Catherine Millett

Senior Research Scientist | Educational Testing Services

What ensures a sustainable partnership? Millett presents and facilitates a conversation on the ways to ensure that cross-institutional partnerships in support of marginalized student populations address the issues that affect students the most.

9:30 Engaging with Creative Collaborations / PH

The goal of this session is to identify the key challenges to improving access to marginalized groups in local landscapes. How can we leverage partnerships to improve access? With LEGO® bricks, participants will form groups and create models of problem solving through successful collaboration.

Facilitated by:

Catherine Millett

Senior Research Scientist | Educational Testing Services

10:45 Coffee / Tea / ML

11:15 Funding Institutions that Serve Marginalized Students / PH

Graeme Atherton

Director | AccessHE

William F. L. Moses

Managing Director, Education | The Kresge Foundation

Betty J. Overton-Adkins

Professor, School of Education | University of Michigan

What are some of the general trends in public, private, and joint funding for higher education? This panel examines how funders and educational institutions can develop clear messaging and sustainable forms of support for underrepresented students.

Facilitated by:

Marybeth Gasman

Professor | University of Pennsylvania

12:30 Group Photograph / TR

12:45 Lunch / MH

14:00 Case Study: European Action Network / PH

Mary Tupan-Wenno

President | European Access Network

In-depth case study on the European Access Network, an European-wide, non-governmental organization for widening participation in higher education for those who are currently under-represented, whether for reasons of gender, ethnic origin, nationality, age, disability, family background, vocational training, geographic location, or earlier educational disadvantage.

Facilitated by:

Catherine Millett

Senior Research Scientist | Educational Testing Services

15:30 Coffee / Tea / ML

16:00 The Ideal & Real: Dialogue Groups / PH, CONT. TO CR / MGR / BR

/ MRL / SR1 / SR3

Based on previous dialogue, participants form groups to reflect on challenges to and likely opportunities in improving access of marginalized groups in local landscapes and for international knowledge sharing and action. They may also examine institutional and social support systems (whether ideal or real) seeking to close gaps in availability.

Facilitated by:

Michael Nettles

Senior Vice President | Educational Testing Services

17:30 Adjourn/Wrap Up and Thoughts for Next Day

19:00 Dinner / MH

20:30 Fireside Chat: Learning from Each Other / GH

Kimberly Reyes

*Ph.D. Candidate, Center for the Study of Higher and Postsecondary
Education | University of Michigan*

Kyle Southern

*Ph.D. Candidate, Center for the Study of Higher and Postsecondary
Education | University of Michigan*

Open showcase of cutting-edge work on facilitating more inclusive and integrated environments being done by students, researchers and practitioners. How are they doing this?

Facilitated by:

Thai-Huy Nguyen

*Researcher | University of Pennsylvania Graduate School of
Education*

Andrés Castro Samayoa

*Researcher | University of Pennsylvania Graduate School of
Education*

Program

Day 5

**Wednesday
15 October, 2014**

07:30 Breakfast / MH

09:00 Program Check-in / PH

Diasmer Panna Bloe

Program Director | Salzburg Global Seminar

**09:15 Words Matter: Improving Messaging about Students at
the Margins and their Institutions / CR / MGR / BR / MRL / SR1 /
SR3**

In previous groups, participants finalize their thinking on diversity, support systems, frameworks for inclusion, and evaluation and formulate next steps for learning and action within and between institutions and support systems. Participants refine their work with effective messaging that improves understanding between institutions and prospective students, donors, and supporters. They produce a social message piece for their stated audience.

Facilitated by:

Marybeth Gasman

Professor | University of Pennsylvania

Nelson Bowman III

Executive Director of Development | Prairie View A&M University

10:30 Coffee Break / MH

10:45 Creative Presentations / PH

Based on the collaborative work from the preceding session, participants will deliver the results from their brainstorming.

Facilitated by:

Marybeth Gasman

Professor | University of Pennsylvania

Nelson Bowman III

Executive Director of Development | Prairie View A&M University

12:30 Lunch / MH

14:00 Learning in Action: Agenda Moving Forward / PH

Participants synthesize their results into a Salzburg Statement on International Institutions that Serve Students at the Margins and establish commitments for their future work.

SALZBURG
GLOBAL
SEMINAR



Listening. Learning. Leading.



Session 537

**Students at the Margins and the Institutions that Serve Them:
A Global Perspective**

11-16 October 2014

Facilitated by:

Marybeth Gasman

Professor | University of Pennsylvania

Michael Nettles

Senior Vice President | Educational Testing Services

- 15:30 Adjourn
- 16:00 Explore Salzburg
- 18:30 Reception / VR
- 19:00 Concert / GH
- 20:00 Banquet Dinner / MH
- 21:30 Party / BS

Program

Day 6

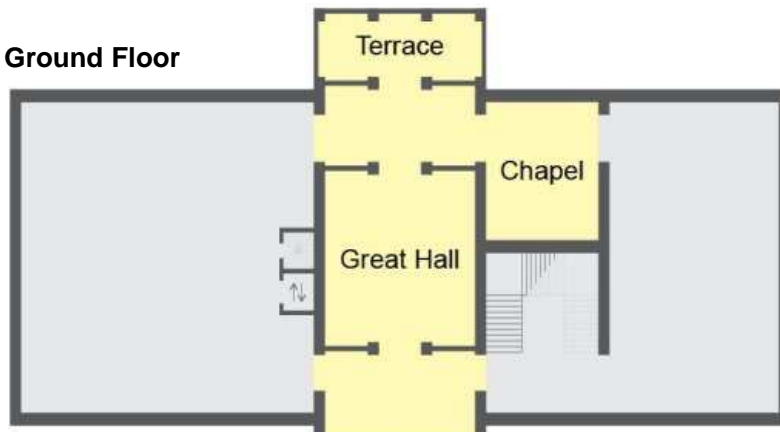
**Thursday
16 October, 2014**

- 07:30 Breakfast / MH
- 11:00 Participants checkout (by 11am)

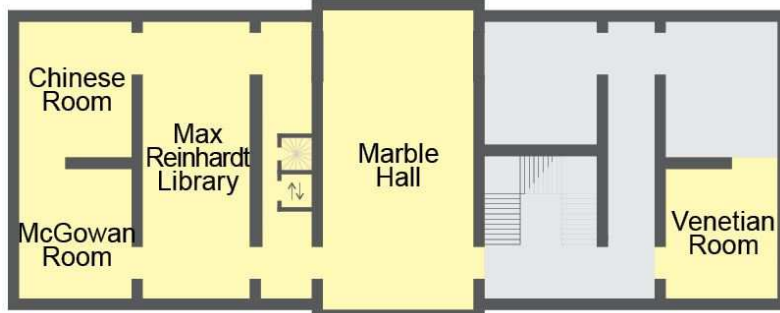
Floor Plan: Schloss

Basement

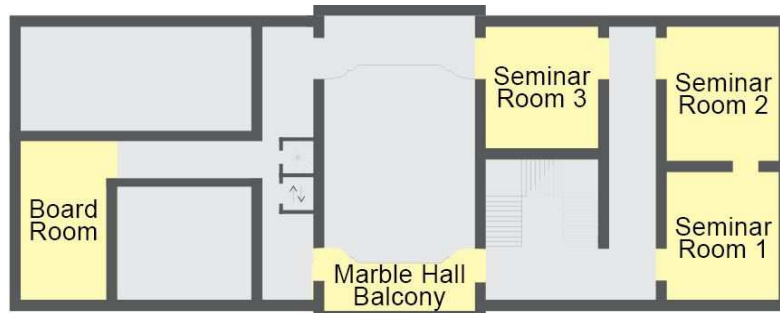
The Bierstube can be found in the Schloss basement.



First Floor



Second Floor

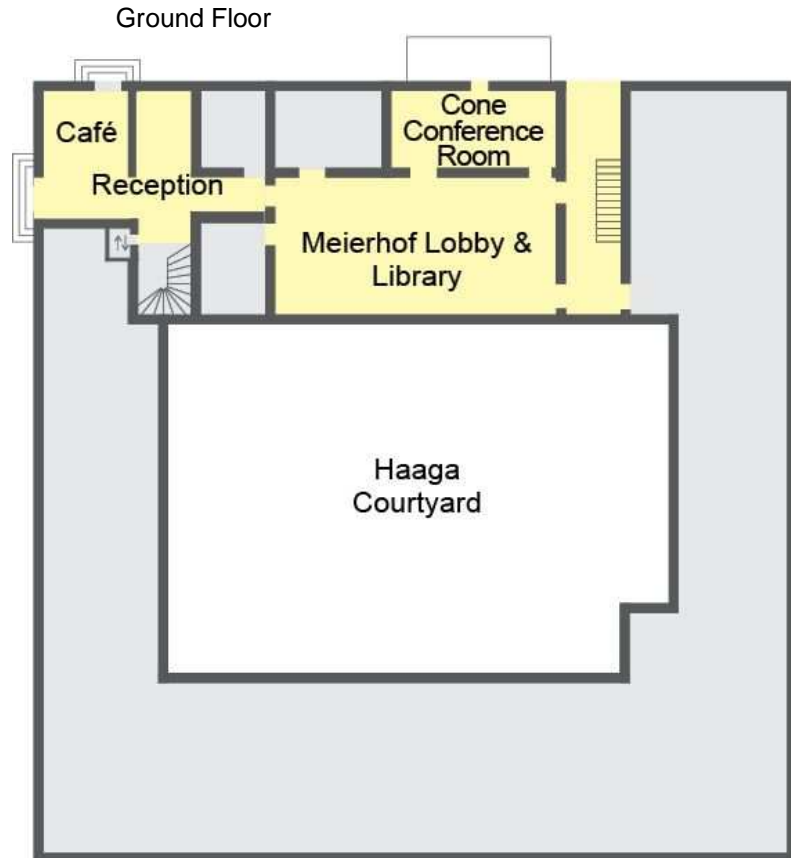


- BR Board Room
- BS Bierstube
- CR Chinese Room
- GH GREAT Hall
- MGR McGowan Room
- MH Marble Hall
- MRL Max Reinhardt Library
- RG Robison Gallery
- SR1 Seminar Room 1
- SR2 Seminar Room 2
- SR3 Seminar Room 3
- TR Schloss Terrace
- VR Venetian Room

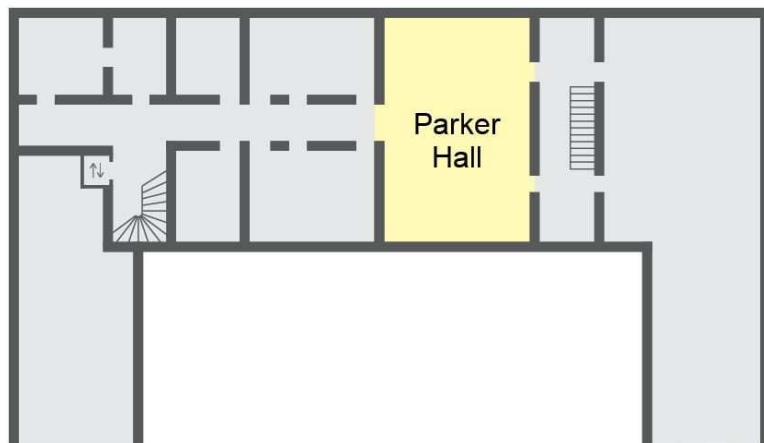
Third Floor

The Robinson Gallery can be found on the third floor of the Schloss.

Floor Plan: Meierhof



First Floor



- CCR Cone Conference Room
- MC Meierhof Cafe
- ML Meierhof Lobby
- PH Parker Hall
- R Reception